

El Gato Triste

C Instruments
MM = 144

James Kalbach, Hamburg, February 2001

Intro

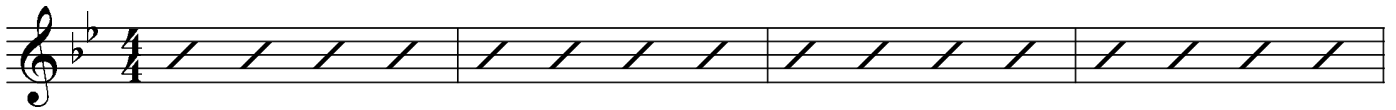
Latin

Gm7

C9

Gm7

C9



Gm7

C9

Gm7

A \flat M7(#11)



A 1

Gm9

E \flat Maj7

A \flat M7(#11)



Am7(b5)

D7(b9)

Gm9

A \flat M7(#11)

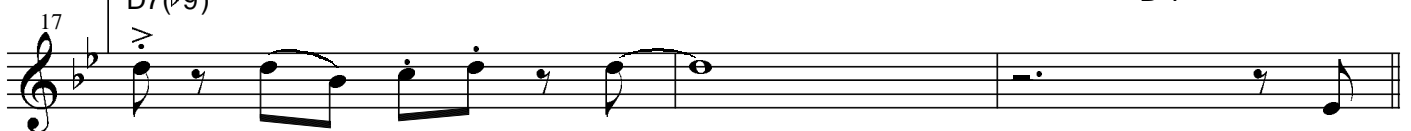


D7(b9)

Gm7

Fm7

B \flat 7



B

Swing

E \flat m7

A \flat 7

A \flat 7(b9)

D \flat Maj7

B \flat 13



Pedal on Ab

E \flat m7

A \flat 7

Am7(b5)

D7(b9)



A 2

Latin

Gm9

E♭Maj7

AbM7(#11)

28

32

36

Coda

Gm7

C9

Gm7

C9

42

Solo - repeat as desired

46

49

52

Form: A A B A